

Energy Monitoring USB Dongle and Real Time Clock



GEBC Bluetooth®



OVERVIEW

The GT-001-GE energy monitoring dongle is for collecting energy consumption data in order to generate energy report. ETC dongle also has RTC (Real Time Clock) Function The GT-001-GE is a Real Time Clock for time syncing for all devices in one Zone.

FEATURES & SPECIFICATIONS

Construction

- GT-001-GE is suitable for a variety of indoor applications.
- Powered by USB-A receptacle.
- Constructed of white/black PC.

Electrical

- BC-USUSB-101-3-GE utilizes a Bluetooth® Low Energy (BLE) mesh network.
- Max Bluetooth® range is 100'(30m) line of sight . It is recommended to conduct testing for range accuracy.

- Input Voltage :USB 5V
- Input Current: 500mA Max
- Bluetooth Transmit: 100ft Max
- Radio Frequency:2.4GHz ± 5MHz
- Bluetooth Version: 5.0Housing
- Indoor Use Only

Installation

- Operating Temperature: -30°C to 55°C,-22°F to 131°F
- Storage Temperature: -30°C to 85°C,-22°F to 185°F

Warranty

- 5-years limited warranty.

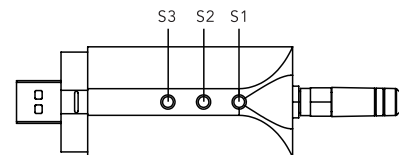
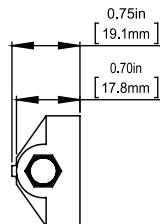
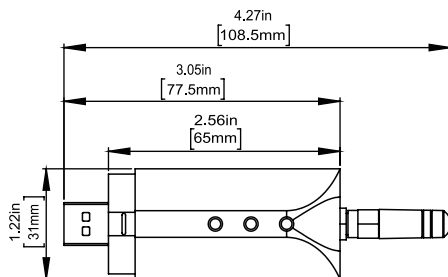
Listings

- FCC
- ETL
- DLC
- Bluetooth®
- Declaration ID: D062134

Note:

Bluetooth Range is highly dependent on the integration of fixtures, surrounding environment and conditions. It is recommended to conduct testing for range accuracy.

DIMENSIONS AND APPEARANCE



Press and hold the " S1" and " S3" button for 5 seconds until the green light starts to blink . You can scan and add Gateway by APP .

Press and hold the " S1" and " S2" button for 5 seconds . You can scan and add Timer by APP .

ORDERING GUIDE

Description	Part Number
Energy Monitoring USB Dongle and Real Time Clock	GT-001-GE